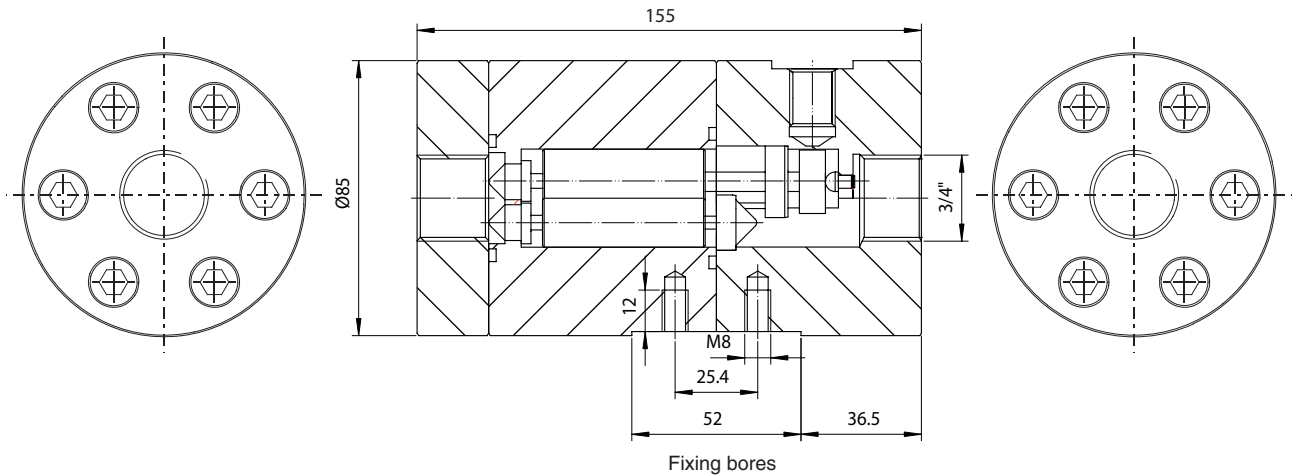
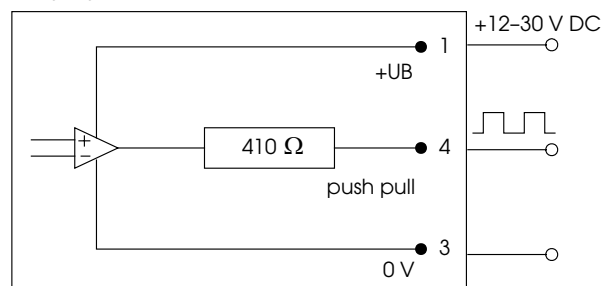


SRZ40 Cross section drawing

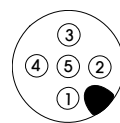


SRZ40 Electrical Data

Supply voltage: 12 up to 30 VDC
 Output: Push pull, squarewave signal
 I_{out} max. 20 mA
 Duty cycle 1:1



Electrical connection: flange plug type 713 (M12x1)
 1 = +UB 12 up to 30 VDC
 2 = nc
 3 = 0 V
 4 = push pull out, double frequency
 5 = PE



Ingress protection: IP 67